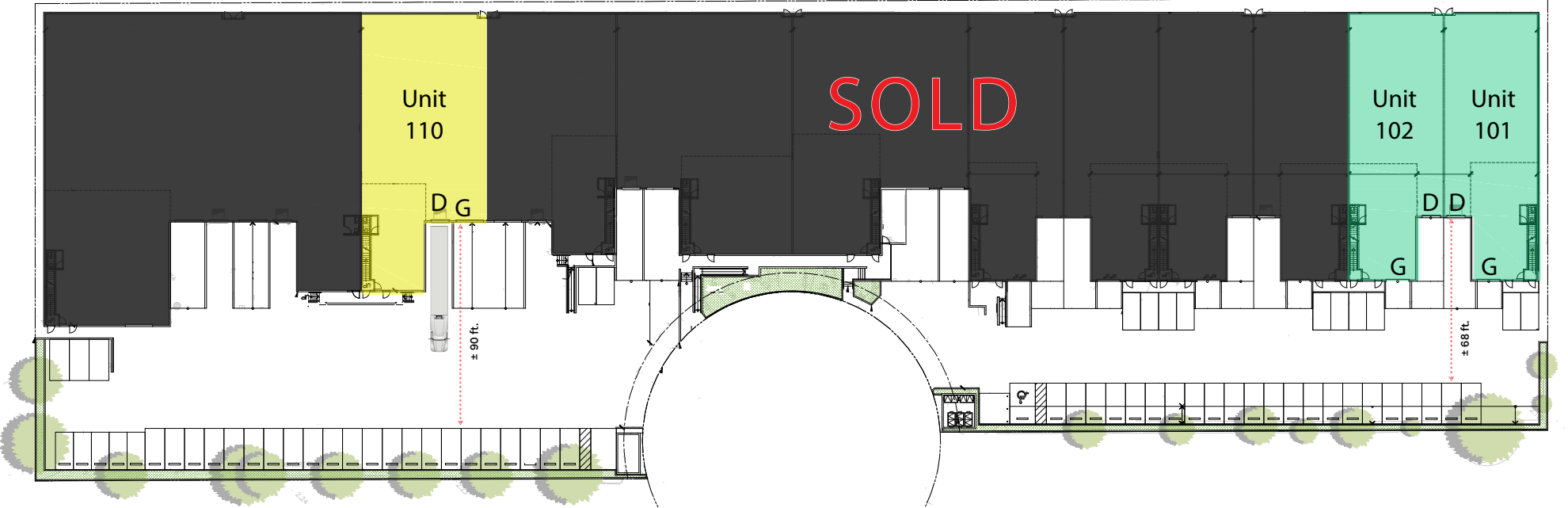




BRAND NEW DOCK AND GRADE WAREHOUSE STRATA
11920 FORGE PLACE RICHMOND, BC

UNIT 110





UNIT AVAILABILITY & PRICING

Unit	Main Floor SF	Mezzanine SF	Total SF	Price PSF	Sale Price
101	4,611	1,569	6,180	\$750	\$4,635,000
102	4,611	1,556	6,167	\$750	\$4,625,250
103			SOLD		
104			SOLD		
105			SOLD		
106			SOLD		

Unit	Main Floor SF	Mezzanine SF	Total SF	Price PSF	Sale Price
107			SOLD		
108			SOLD		
109			SOLD		
110	6,049	1,356	7,405	\$725	\$5,368,625
111			SOLD		
112			SOLD		



UNIT HIGHLIGHTS



CONSTRUCTION
Concrete tilt up construction



POWER
3- phase electrical per unit



LOADING
Dock loading door
Grade loading access



ACCESSIBILITY
1 washroom + 1 mezzanine
rough in



CEILING HEIGHT
28' clear ground floor
ceiling height



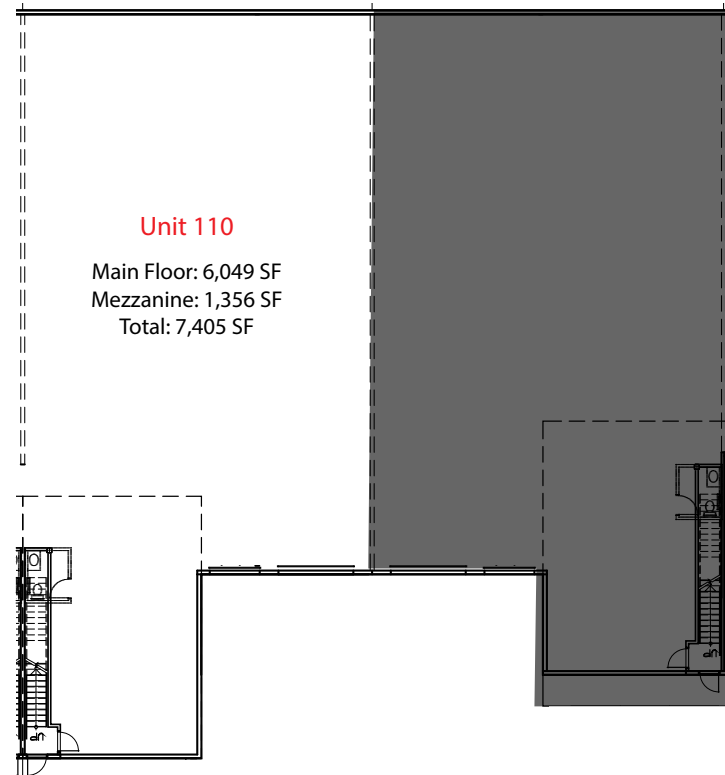
EXPECTED DELIVERY
Summer 2024



FLOOR LOAD
Sealed concrete ground floor
with 600 pounds PSF capacity



ZONING
IB-1 (Industrial Business
Park)



CONTACT US

Alex Mei 梅嘉俊

PERSONAL REAL ESTATE CORPORATION

Associate Vice President
Industrial Properties Group

alex.mei@cbre.com

778 788 3106

Luc Soares

Sales Associate
Industrial Properties Group

luc.soares@cbre.com

778 372 1938

