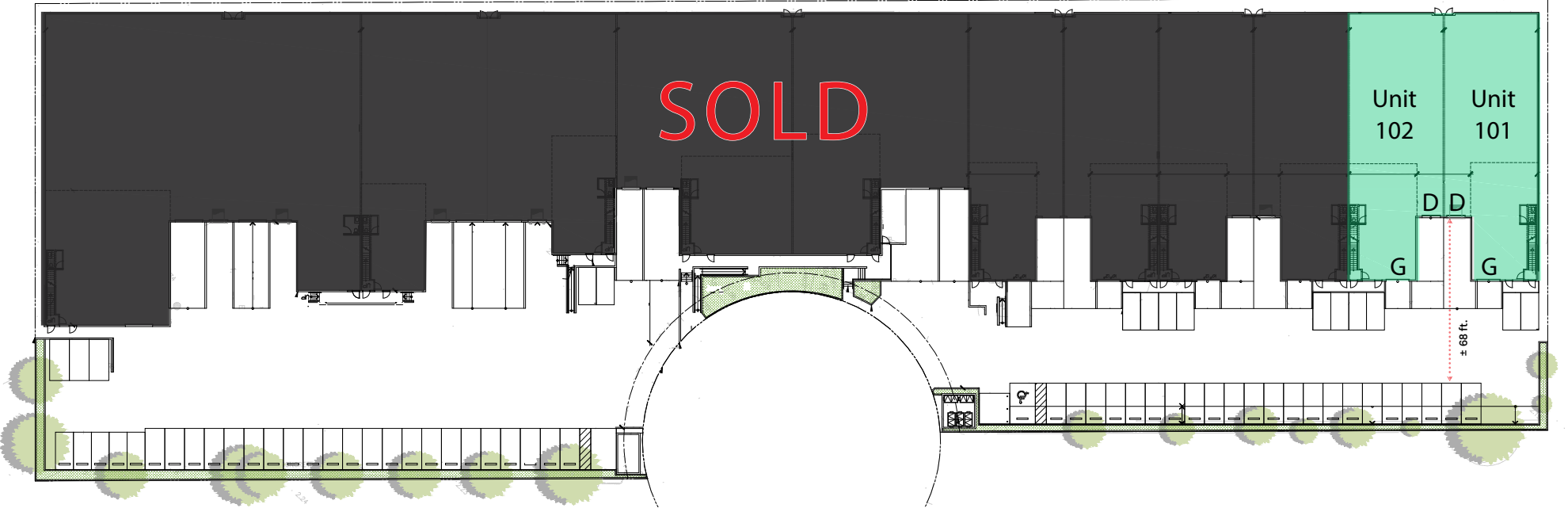




BRAND NEW DOCK AND GRADE WAREHOUSE STRATA  
11920 FORGE PLACE RICHMOND, BC

**FINAL UNITS**  
**101 & 102**





### UNIT AVAILABILITY & PRICING

Unit	Main Floor SF	Mezzanine SF	Total SF	Price PSF	Sale Price
101	4,611	1,569	6,180	\$750	\$4,635,000
102	4,611	1,556	6,167	\$750	\$4,625,250
103	—————	—————	SOLD	—————	—————
104	—————	—————	SOLD	—————	—————
105	—————	—————	SOLD	—————	—————
106	—————	—————	SOLD	—————	—————

Unit	Main Floor SF	Mezzanine SF	Total SF	Price PSF	Sale Price
107	—————	—————	SOLD	—————	—————
108	—————	—————	SOLD	—————	—————
109	—————	—————	SOLD	—————	—————
110	—————	—————	SOLD	—————	—————
111	—————	—————	SOLD	—————	—————
112	—————	—————	SOLD	—————	—————



## UNIT HIGHLIGHTS



**CONSTRUCTION**  
Concrete tilt up construction



**POWER**  
3- phase electrical per unit



**LOADING**  
Dock loading door  
Grade loading access



**ACCESSIBILITY**  
1 washroom + 1 mezzanine rough in



**CEILING HEIGHT**  
28' clear ground floor ceiling height



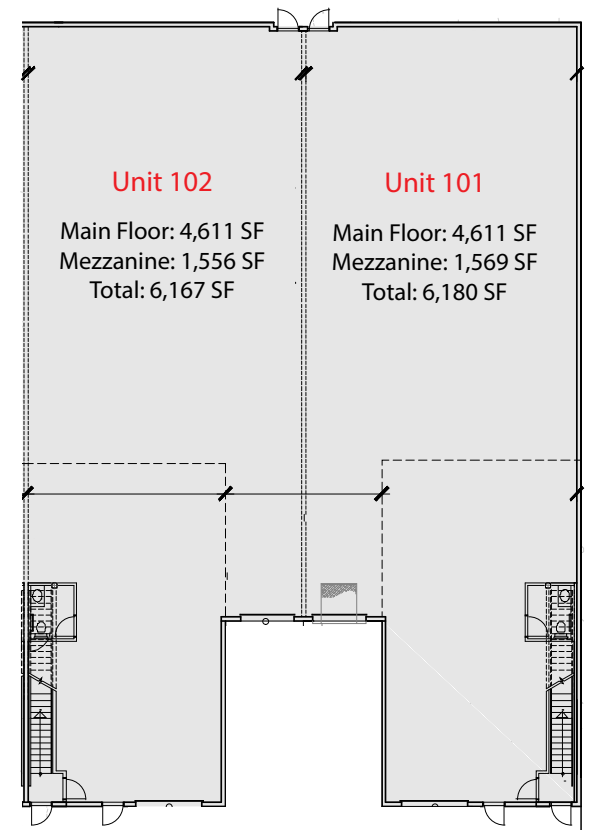
**EXPECTED DELIVERY**  
Summer 2024



**FLOOR LOAD**  
Sealed concrete ground floor with 600 pounds PSF capacity



**ZONING**  
IB-1 (Industrial Business Park)



# CONTACT US

## Joel Barnett

PERSONAL REAL ESTATE CORPORATION  
Executive Vice President  
Industrial Properties Group  
joel.barnett@cbre.com  
604 662 5570

## Steve Brooke

PERSONAL REAL ESTATE CORPORATION  
Senior Vice President  
Industrial Properties Group  
steve.brooke@cbre.com  
604 662 5147

