

**THE  
INDUSTRIAL  
SPECIALISTS**



# For Lease

**Unit 105**  
**901 East Kent Avenue N**  
Vancouver, BC

## Opportunity

to lease 2,733 sq.ft. of prime  
light industrial strata warehouse  
in South Vancouver

### **Alex Mei 梅嘉俊**

Personal Real Estate Corporation  
Associate Vice President  
Industrial Properties Group  
778 788 3106  
alex.mei@cbre.com

### **Joel Barnett**

Personal Real Estate Corporation  
Executive Vice President  
Industrial Properties Group  
604 662 5570  
joel.barnett@cbre.com

### **Steve Brooke**

Personal Real Estate Corporation  
Senior Vice President  
Industrial Properties Group  
604 662 5147  
steve.brooke@cbre.com

### **Luc Soares**

Sales Associate  
Industrial Properties Group  
778 372 1938  
luc.soares@cbre.com

[theindustrialspecialists.com](http://theindustrialspecialists.com)

**CBRE**

# For Lease

#105  
901 East Kent Avenue N  
Vancouver, BC

## Property Details

**Total Unit Size: 2,733 SF**

Main floor: 1,904 SF  
Mezzanine: 829 SF

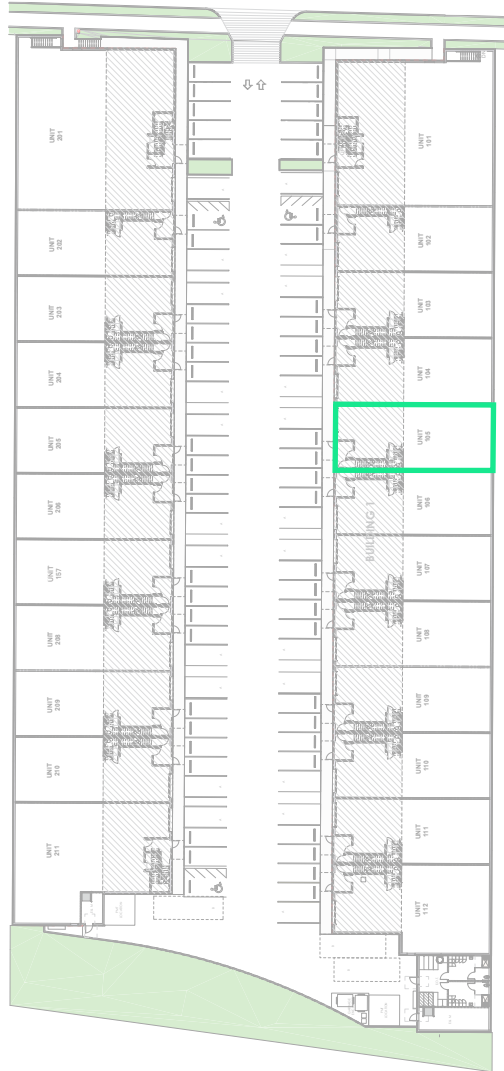
**Ceiling Height**  
26' clear

**Loading**  
1 grade door

**Zoning**  
I-2

**Available**  
Immediately

**Asking Rate**  
Contact Listing Agents



## Location

The property is primarily located in South Vancouver one block south of SE Marine Drive between Ross Street and Chester Street. This location is 2 minutes from the Knight Street Bridge and provides convenient access to Downtown Vancouver, Vancouver International Airport and key transportation routes throughout the Lower Mainland. The area is well serviced by public transit and provides enhanced access for commuters using the Canada Line Sky Train.



CBRE Limited 1021 West Hastings Street #2500, Vancouver, BC V6E 0C3 | [cbre.ca](http://cbre.ca)

This disclaimer shall apply to CBRE Limited, Real Estate Brokerage, and to all other divisions of the Corporation; to include all employees and independent contractors ("CBRE"). All references to CBRE Limited herein shall be deemed to include CBRE, Inc. The information set out herein, including, without limitation, any projections, images, opinions, assumptions and estimates obtained from third parties (the "Information") has not been verified by CBRE, and CBRE does not represent, warrant or guarantee the accuracy, correctness and completeness of the Information. CBRE does not accept or assume any responsibility or liability, direct or consequential, for the Information or the recipient's reliance upon the Information. The recipient of the Information should take such steps as the recipient may deem necessary to verify the Information prior to placing any reliance upon the Information. The Information may change and any property described in the Information may be withdrawn from the market at any time without notice or obligation to the recipient from CBRE. CBRE and the CBRE logo are the service marks of CBRE Limited and/or its affiliated or related companies in other countries. All other marks displayed on this document are the property of their respective owners. All Rights Reserved. Mapping Sources: Canadian Mapping Services [canadamapping@cbre.com](http://canadamapping@cbre.com); DMTI Spatial, Environics Analytics, Microsoft Bing, Google Earth.